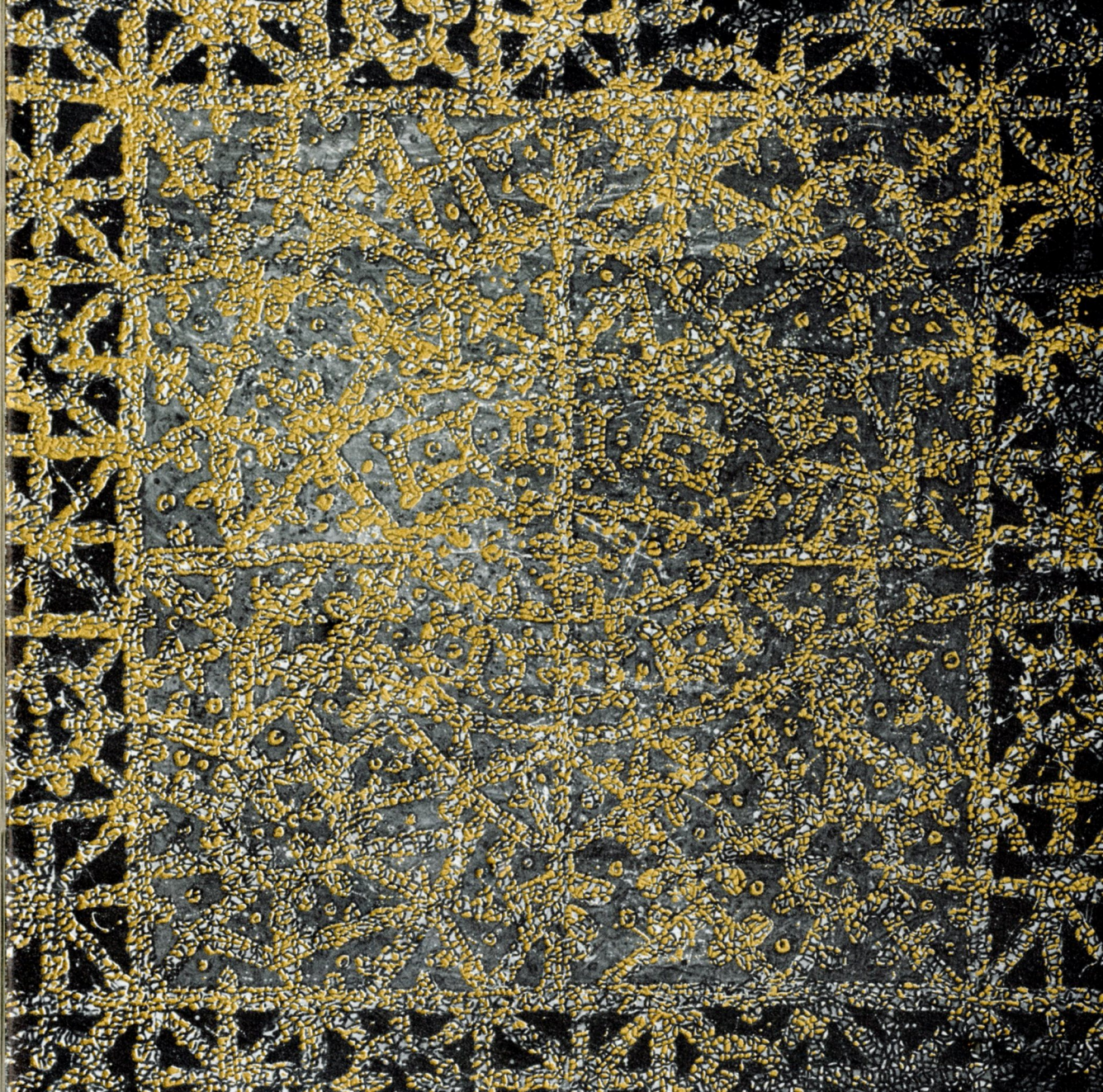


*Paintings, Drawings and Sculpture From A Personal Collection*

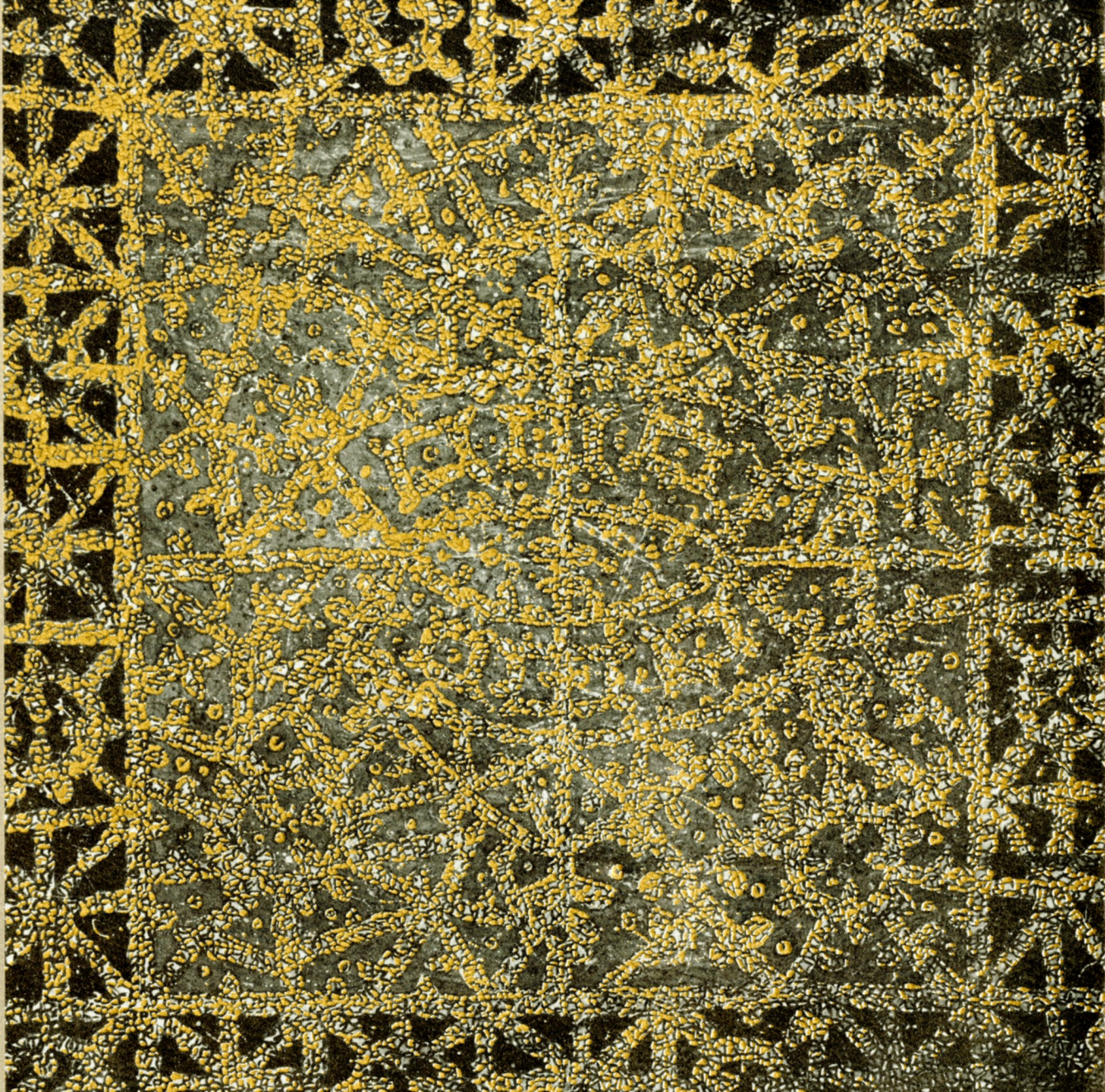




ΕΘΝΙΚΗ  
ΒΙΒΛΙΟΘΗΚΗ  
ΜΟΥΣΕΙΟ  
ΑΛΕΞΑΝΔΡΟΥ  
ΣΟΥΤΖΟΥ







202.4 US 1964

## *Introduction*

This Exhibition of the F. M. Hinkhouse Collection, in honor of the dedication of St. John's College in Santa Fe, is uniquely suited to its present purpose: to introduce art to the student of this college. Beyond being exposed to a historical era in art, the 19th and 20th Centuries, the student will profit by this introduction to a collector's taste and purpose. This exhibition is in the broadest sense educational, for it is the working collection of a Museum Director.

As the Director of the Phoenix Art Museum, Dr. Hinkhouse is charged with the establishment and development of American, European, Asian and Primitive collections. Peripheral to this endeavor, his personal collection provides him with exploratory, first-hand experience in areas of art which are outside the mainstream of the Museum collections, and the inspiration to initiate occasionally a new direction in the Museum's accession policy.

A 19th Century terra-cotta sculpture by Carpeaux and works by Cassatt, Gauguin, Maillol, Sickert, Chinnery and Wood are foils to contemporary works by Berman, Nolan, Jenkins, Richier, Hultberg and Hennessey. In viewing this exhibition the student will be introduced to the experience of color and form as considered creations in themselves, a new language for his edification and enjoyment.

Clare Boothe Luce, in her introduction to the Collection of Contemporary Art at Coe College, Cedar Rapids, Iowa, assessed the historic relationship of an art collection and the Educational Institution. It is quoted here, in part, as important to goals of such a college as St. John's:

"In European universities the importance of arts in the general educational process has been recognized for centuries.

"Such thoroughly established universities as Oxford with its Ashmolean Museum, have acted as guides for the more conscientious schools in the United States. Harvard, with its notable Fogg Museum, and Yale University, with the University Gallery, have maintained considerable collections for many years, while Brandeis University and the Universities of Miami and California, to name but a few outstanding examples, have created collections of considerable importance in painting, sculpture and the graphic arts since the Second World War. Such art collections act as hand-maidens, not only for fine arts and art history majors, but also are related work in such areas as social studies and sciences."

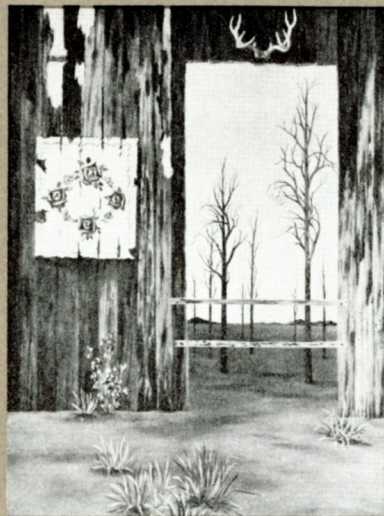
JAMES HARITHAS  
Curator of Collections  
Phoenix Art Museum

October, 1964



# Catalogue

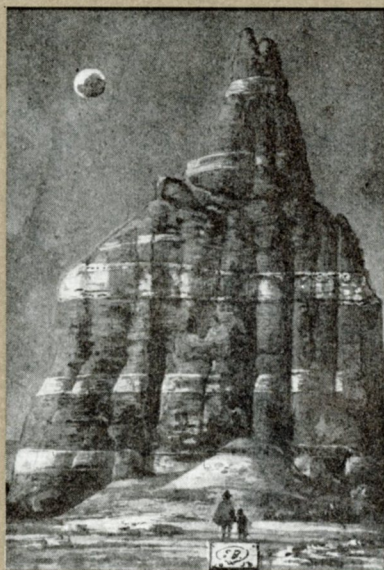
- BAKER, JACK — American 1925-  
 1. Roofs of Harrar Oil, 22½ x 28
- BERMAN, EUGENE — American 1899-  
 2. Le Ruisseau Oil, 23 x 15¼  
 3. Sketch for Gisella: Act I Watercolor, 9¼ x 6  
 4. Cathedral Rock Oil, 10¼ x 14¼
- BRAUNER, VICTOR — Roumanian 1903  
 5. Contemplation Drawing, 8¼ x 5⅝
- BURY, POL — School of Paris 1922  
 6. Homage to Arizona Kinetic Sculpture, 3 x 15¼
- CALCAGNO, LARRY (LAWRENCE) — American 1916-  
 7. Mohave Oil, 41 x 15
- CAPRALOS, CHRISTOS — Greek 1908-  
 8. The Chariot (Front Cover) Bronze, 9½ x 11½  
 9. Monument to Watteau (Rear Cover) Terra-cotta, 30 x 24
- CARPEAUX, J. B. — French 1827-1875  
 10. Woman with Hat Drawing, 5½ x 9⅜
- CASSATT, MARY — American 1845-1926  
 11. I Fidanzati Watercolor, 13½ x 9¼
- CHIN, ALAN — American 1927-  
 12. Night in the Square Oil, 32 x 40
- CHINNERY, GEORGE — English 1774-1865  
 13. Malabar Palm Drawing, 7 x 9¾
- CONE, MARVIN — American 1891-  
 14. Pennsylvania Barn Oil, 8¾ x 21¾
- CROSS, H. E. — French 1856-1910  
 15. Three Little Girls Pencil & Crayon, 5½ x 2¼
- CURTIS, PHILIP C. — American 1908-  
 16. Passage Way Oil, 23½ x 17½
- DEHN, ADOLPH — American 1895-  
 17. The Party Watercolor, 14⅜ x 21⅜
- DELVAUX, PAUL — Belgian 1897-  
 18. "Head" Ink and Wash, 7 x 8½
- DESPIAU, CHARLES — French 1874-1946  
 19. "Nu Assis" Crayon, 13½ x 9
- ETTING, EMLÉN — American 1905-  
 20. Sailor on Horseback in Hyde Park Watercolor, 4¾ x 7⅜
- FRANCIS, SAM — American 1923-  
 21. No. 26 Lithograph, 19½ x 23½
- FULLBROOK, SAM — Contemporary Australian  
 22. Girl with Galah Oil, 17⅞ x 13⅞
- GAUGUIN, PAUL — French 1848-1903  
 23. Crucifix Woodcut, 15¼ x 5
- GUILLAUMIN, JEAN-BAPTISTS-ARMAND — French 1841-1927  
 24. Still Life Oil, 16 x 12
- HAACKE, HANS — Germany 1935  
 25. Untitled Lithograph, 15 x 22½
- HENNESSEY, TIMOTHY — American 1925-  
 26. Persian Escutcheon (Slip Leaf) Oil, gouache on silk, 98 x 38
- HULTBERG, JOHN — American 1922-  
 27. Two Spheres Watercolor, 11 x 5½



16



48



4



2



## Catalogue Continued

- |                                     |           |                        |
|-------------------------------------|-----------|------------------------|
| JENKINS, PAUL — American            | 1923-     |                        |
| 28. P. K.                           |           | Watercolor, 20 x 13    |
| KOMATSU, FUMI — Japanese            | 1928-     |                        |
| 29. Ripples                         |           | Lithograph, 16 x 12    |
| LANDSEER, SIR EDWIN HENRY — English | 1802-1873 |                        |
| 30. Leopard                         |           | Drawing, 7 x 4½        |
| LEVEE, JOHN — American              | 1924-     |                        |
| 31. "Swiss Flag"                    |           | Mixed Media, 8½ x 8½   |
| LUCE, CLARE BOOTHE — American       | 1903-     |                        |
| 32. Mathematics of Moonlight        |           | Mosaic, 36½ x 18       |
| LURCAT, JEAN — French               | 1892-     |                        |
| 33. The Island                      |           | Oil, 21½ x 18½         |
| MAILLLOL, ARISTIDE — French         | 1861-1944 |                        |
| 34. Nude                            |           | Drawing, 4¾ x 4¼       |
| MARCKS, GERHARDT — German           | 1889-     |                        |
| 35. Nude Boy                        |           | Drawing, 10 x 8        |
| METEYARD, THOMAS B. — American      | 1865-1928 |                        |
| 36. Notre Dame                      |           | Oil, 17½ x 12¾         |
| METCALF, CONGER — American          | 1915-     |                        |
| 37. Study                           |           | Drawing, 19¼ x 27½     |
| MOLVIG, JON — Australian            | 1923-     |                        |
| 38. Ballad of the Snake             |           | Oil, 19¾ x 23½         |
| MUSIC, ANTONIO — Italian            | 1909-     |                        |
| 39. Venice                          |           | Crayon, 12 x 18¼       |
| NOLAN, SIDNEY — Australian          | 1917-     |                        |
| 40. Convict in the Outback          |           | Helizarin Dye, 10 x 12 |
| 41. "Camelback Mountain"            |           | Oil, 8½ x 12           |
| PAYNE, WOODWARD — American          | 1935-     |                        |
| 42. Montemarte Triptych             |           | Oil, 72 x 72           |
| PICASSO, PABLO — Spanish            | 1881-     |                        |
| 43. Ceramic Pitcher                 |           | Ceramic, 9¼            |
| PUCKLE, R. D. A. — American         | 1905-     |                        |
| 44. Arizona Landscape               |           | Casein, 20½ x 48½      |
| REMENICK, SEYMOUR — American        | 1923-     |                        |
| 45. East River Drive                |           | Oil, 11½ x 9½          |
| RICHIER, GERMAINE — French          | 1904-     |                        |
| 46. La Clauve Souris                |           | Lithograph, 15½ x 21½  |
| SCOTT, WILLIAM — English            | 1913-     |                        |
| 47. Seated Figure                   |           | Drawing, 20 x 14       |
| SICKERT, WALTER RICHARD — English   |           |                        |
| 48. Dieppe                          |           | Drawing, 10 x 8        |
| STUBBINGS, TONY — American          |           |                        |
| 49. Head                            |           | Oil, 7 x 5             |
| TAMAYO, RUFINO — Mexican            | 1899-     |                        |
| 50. Dancer from a Primitive Land    |           | Gouache, 16 x 13       |
| URQUHART, TONY — Canadian           | 1930-     |                        |
| 51. Landscape with Flowers          |           | Drawing, 9¼ x 9½       |
| VALLOTTON, FELIX — French           | 1865-1925 |                        |
| 52. "Nu Etendu"                     |           | Pencil, 12¾ x 10       |
| WADDELL, JOHN — American            | 1921-     |                        |
| 53. Head of Woman                   |           | Bronze, 14             |
| WOOD, CHRISTOPHER — English         | 1901-1930 |                        |
| 54. Running Nude                    |           | Drawing, 13¾ x 19½     |
| 55. Street in Dieppe                |           | Drawing, 11 x 18¼      |

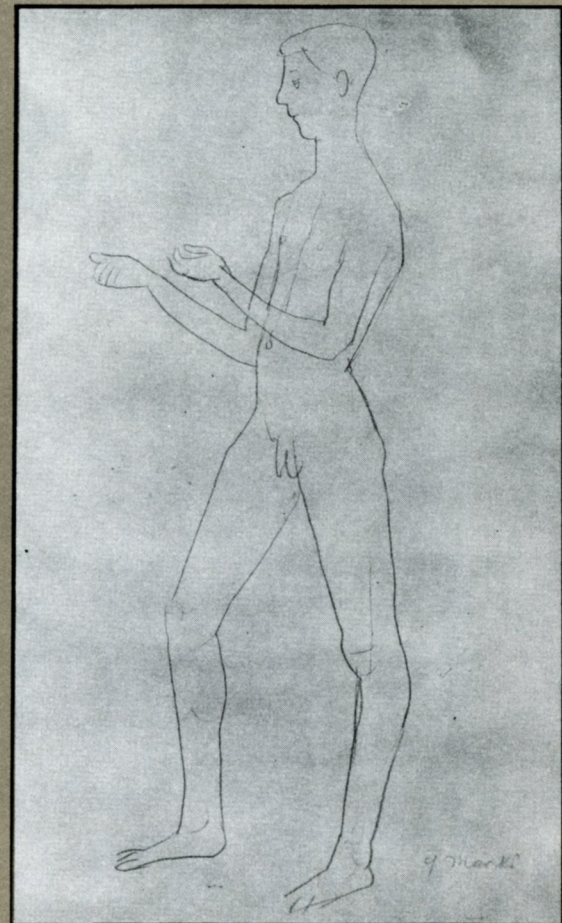
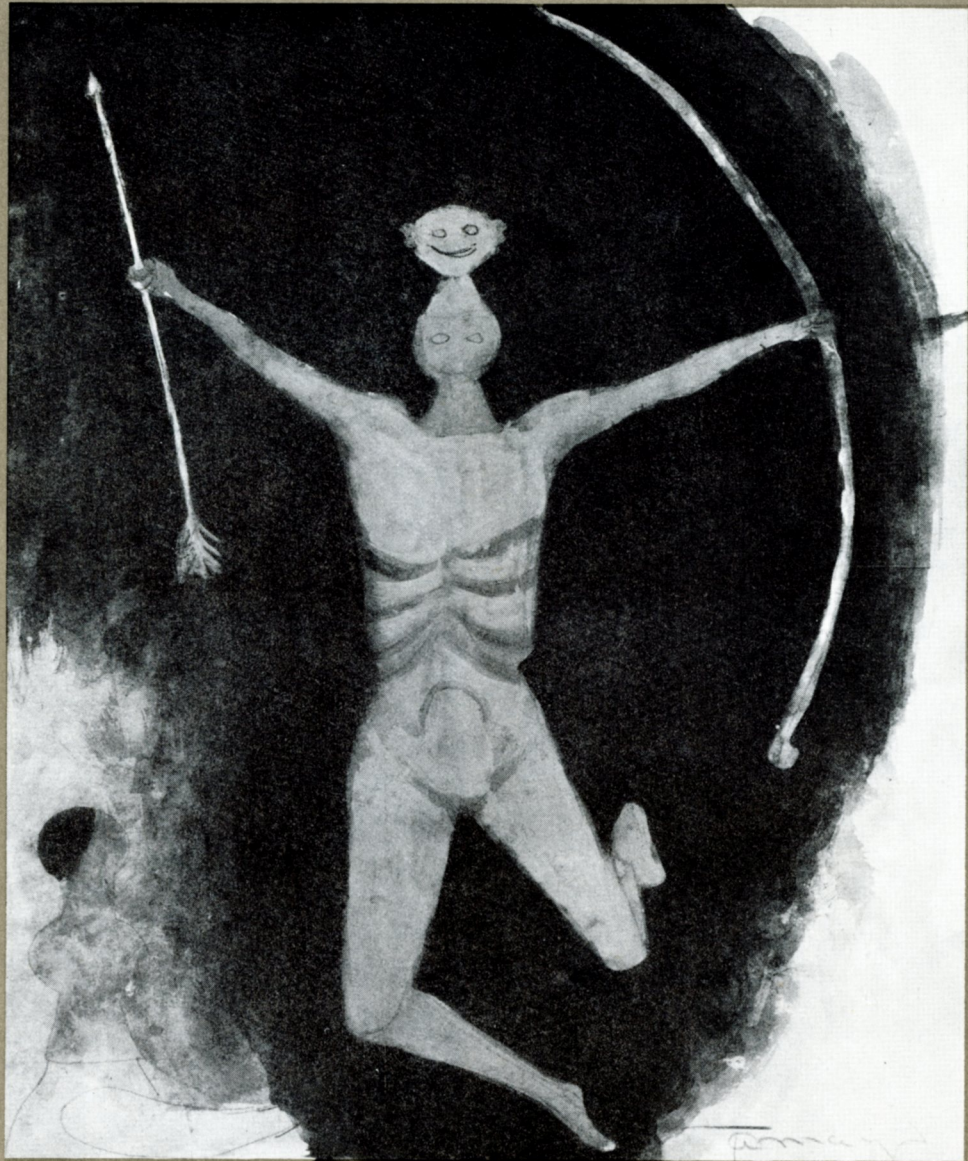


33

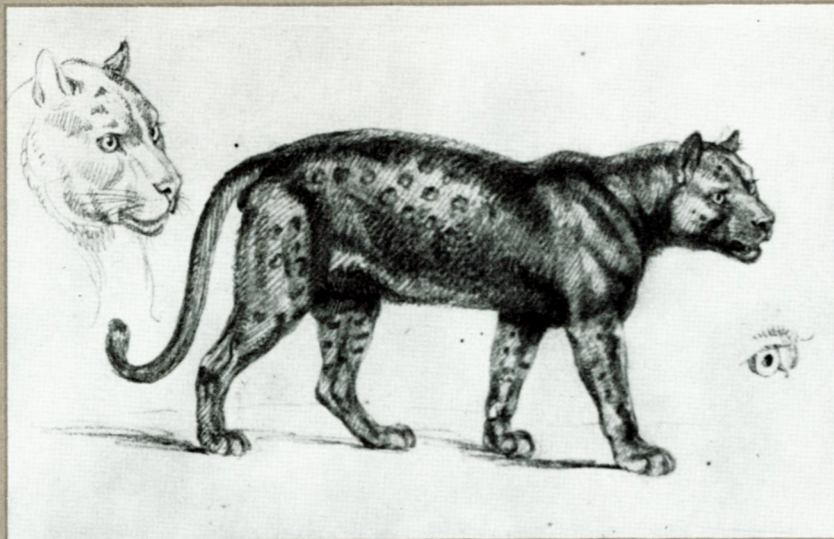


40





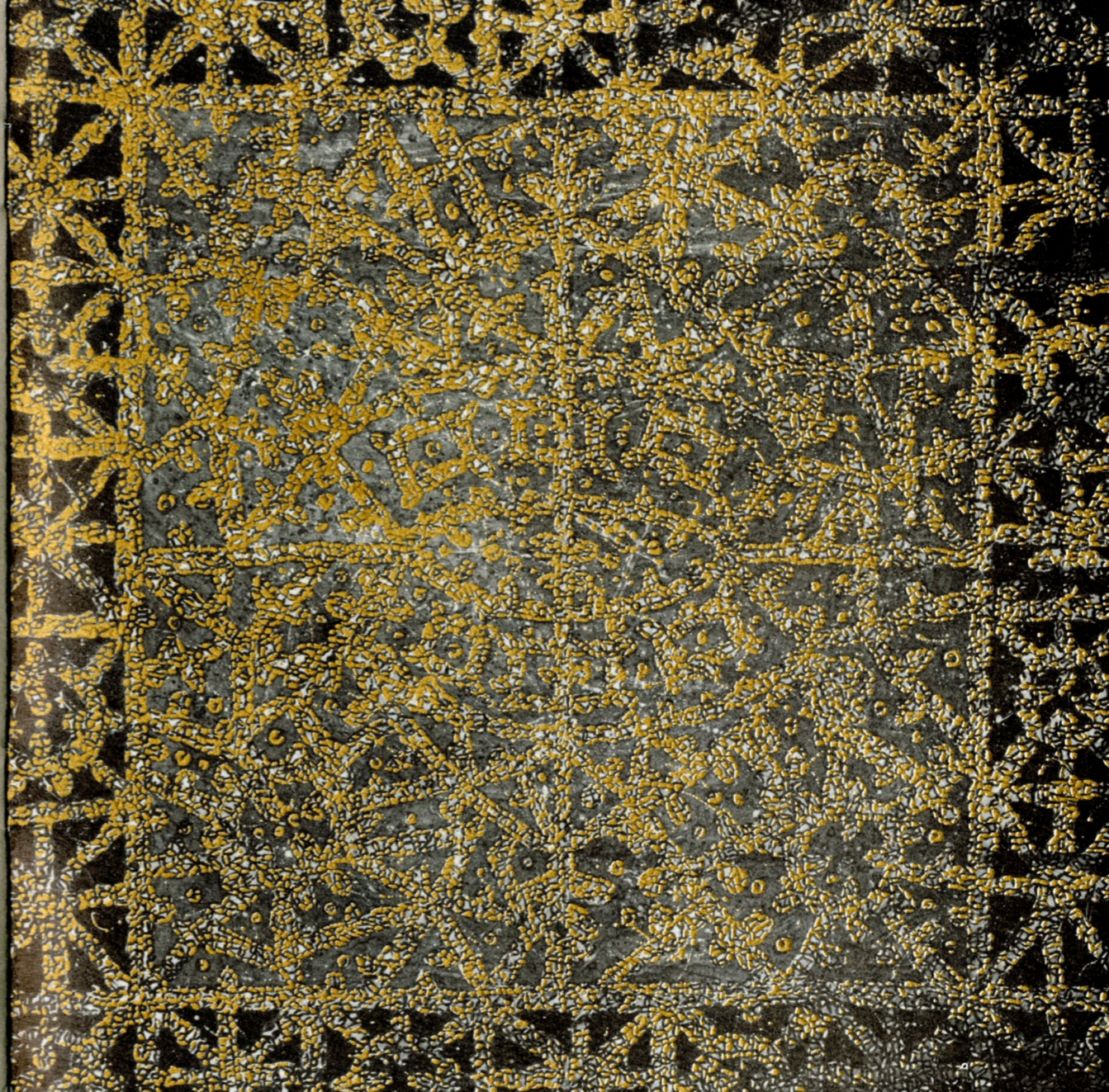




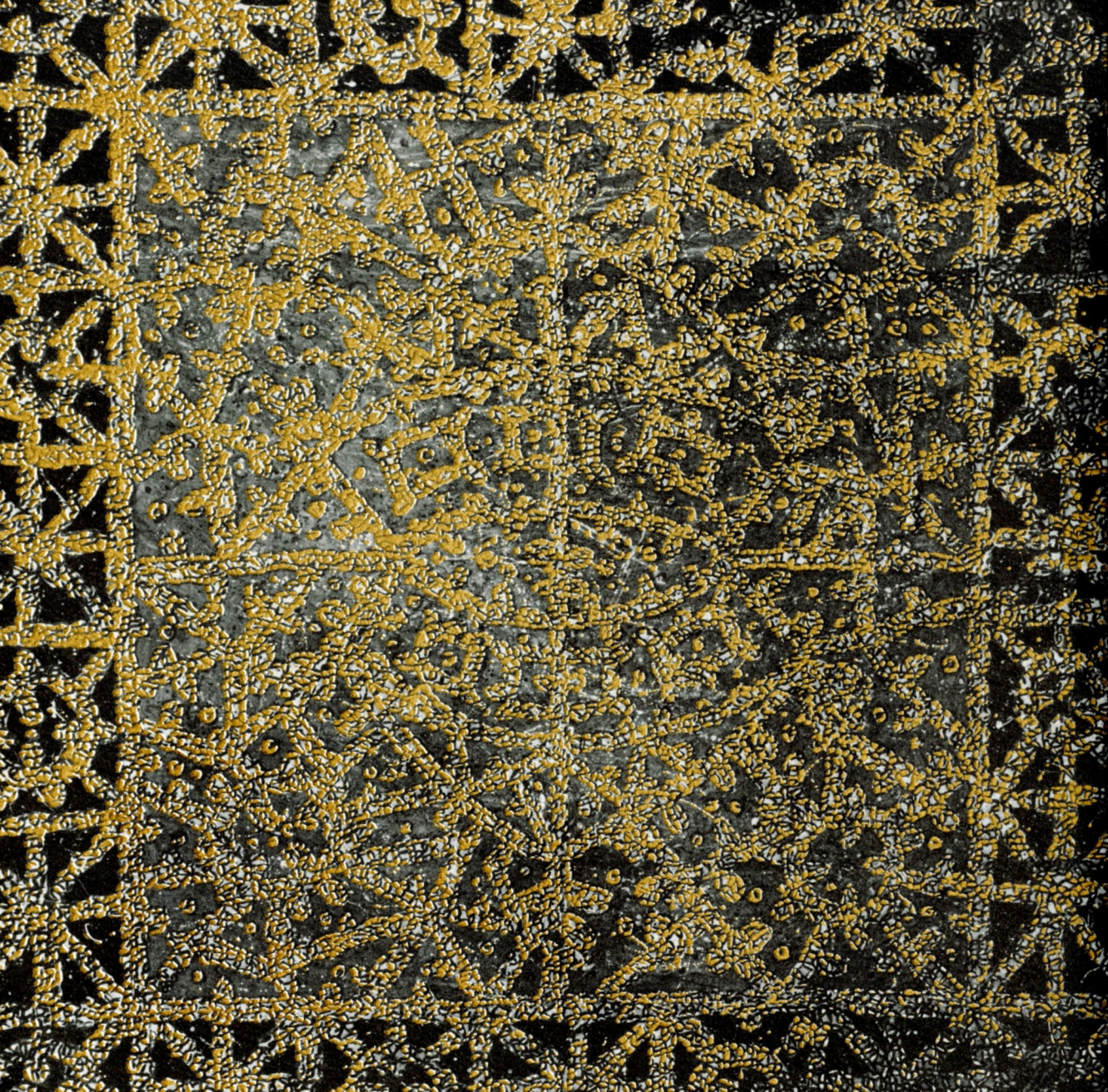
30



1



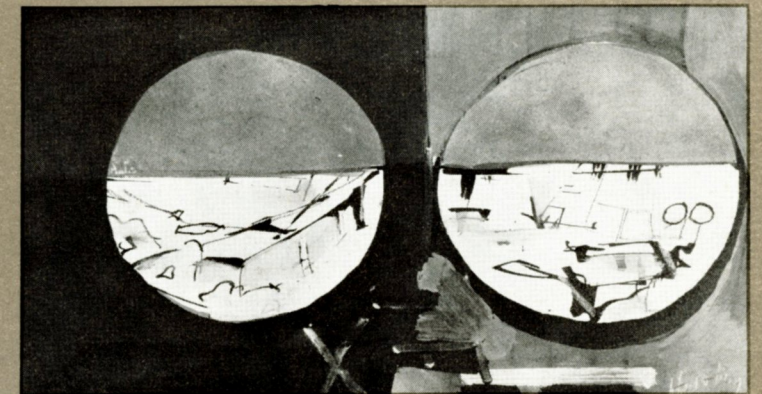




*Board of Visitors and Governors of St. John's College*

John D. Alexander, Jr.  
Bromwell Ault  
Walter S. Baird  
Col. William C. Baxter  
Joseph L. Bean  
The Honorable Jack M. Campbell  
Richard F. Cleveland  
Chairman  
Francis G. Coates  
Edward J. Dwyer  
Thomas M. Evans  
Col. E. E. Fogelson  
Victor Frenkil  
Floyd D. Hall  
Richard H. Hodgson  
Carlisle Humelsine  
William S. James  
Mrs. Everett H. Jones  
John S. Kieffer  
Edward A. Kimpel, Jr.

Donald P. Kircher  
William A. Lydgate  
Vice Chairman  
Robert M. McKinney  
Marvin Mandel  
John Gaw Meem  
Walter C. Mylander, Jr.  
Secretary  
Charles A. Nelson  
Mrs. Duane L. Peterson  
Edward S. Pinney  
Mrs. John C. Pritzlaff, Jr.  
Louis T. Rader  
Harrison Sasscer  
Mrs. Harry R. Slack, Jr.  
The Honorable J. Millard Tawes  
Mrs. Millard E. Tydings  
Richard D. Weigle  
President  
William M. White  
John L. Williams







*Art Gallery St. John's College Santa Fe, New Mexico*